



Venetian Plaster Techniques



Create the look of fine Italian marble in your home with Special Effects® Venetian Plaster.

This layered application achieves an authentic Venetian Plaster finish reminiscent of those found in the great palaces of Rome. With just one color, you can create a subtle tone on tone appearance with the smooth polish and cool feel of marble. The more layers you apply, the more depth and polish are developed. Venetian Plaster is tintable to any of 24 beautiful colors from our special Venetian palette. Choose a color from the inspiring take home chips showing all the colors as well as the finish.

MATERIALS CHECKLIST

Be sure to practice your application of Venetian Plaster on cardboard until you are comfortable with your results.



1) McCloskey® Special Effects® Venetian Plaster in desired color



2) McCloskey® Special Effects® Venetian Plaster Protective Finish

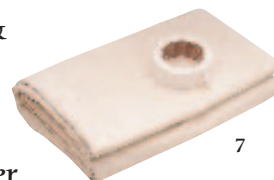
3) Paint Roller with 3/4" nap & Paint Tray (for rolled on method only)



4) Symphony™ Venetian Plaster Steel Spatula



5) Fine Steel Wool-(#0000) (optional)



6) Bucket of Clean Water and a Rag

7) Painter's Tape & Drop Cloth

8) Newspaper

9) Practice Board

Product Information Hotline: To answer any faux finishing question, call our toll free Product Information Hotline: 1-800-345-4530 seven days a week, 8:00 AM to 5:00 PM. or contact us via email at techsupport@valspar.com.

McCloskey is a division of the Valspar Corporation.

Preparation: Important to a successful Venetian Plaster finish is a properly prepared, smooth surface. It should be clean and dry with any holes or surface flaws patched and sanded. Apply PVA latex or stain blocking primer to ensure a smooth, matte, uniform surface. Allow to dry thoroughly. You may have your primer tinted a color similar to the Venetian Plaster you're applying though not necessary. **DO NOT APPLY VENETIAN PLASTER OVER SATIN, SEMI-GLOSS OR GLOSSY PAINT SURFACES.** Read all instructions before beginning your project.

Preparing the Symphony™ Blue Steel Spatula: For the most professional results, you should "dress" your steel spatulas before you use them by lightly sanding the long edge and corners with fine grit sand paper. This will remove any "burrs" or sharp edges that can mar and scratch the plaster surface.

1st Coat, Choose Your Technique

Rolled on Method (For first coat application only)

or

Traditional Troweled-On Method



Use a $\frac{3}{4}$ " nap roller cover to apply Venetian Plaster to a small area, no larger than 3' x 3'. Working quickly, use a Symphony™ Blue Steel Spatula, held at a 10-20° angle to the wall, to knock down and smooth the plaster with an overlapping "X" or arc pattern. This process will remove the "stipples" left by the roller. Skim back over the area, smoothing the surface as much as possible before it begins to set. Have a bucket of clean water close in order to keep the steel spatula clean. Do not allow dried lumps of plaster to accumulate on the spatula as these can cause scratches and mar the plaster surface. Keeping a ragged and random edge, continue across the wall with this process to finish applying the first coat. Let dry approximately 1 to 4 hours. The plaster is dry when it is evenly matte and lighter in color. Follow directions in steps 2 and 3 to apply the second coat and finish your Venetian Plaster project.

This method, while more time consuming, tends to result in a finish with more subtle tone-on-tone variations, and will yield the most professional looking results.

Using the largest Symphony™ Blue Steel Spatula, apply the Venetian Plaster in an overlapping pattern working in a small area about 3' x 3'. Use the smaller spatulas for tight spaces and corners. Continue overlapping the plaster until you have spread a thin coat on the surface. It is not necessary to completely cover the surface at this point—subsequent layers will fill in translucent areas. It's important to spread the plaster thinly and leave the surface as smooth as possible. If the plaster is too thick it may develop surface cracking. Repeat this step on the adjoining area, slightly overlapping the edges. Keep your edge ragged and random as you move across the wall to avoid leaving a pattern. Clean the trowel often with a damp cloth and bucket of water so none of the plaster forms a dry crust that would leave unwanted marks. Continue across the wall until you have finished the first coat. Let dry approximately 1 to 4 hours. Drying time will vary with humidity conditions and how heavily the plaster is applied. When the plaster is evenly matte and lighter in color, it is dry. The second coat is ready to be applied.

PROFESSIONAL TIPS

1) Cover your pail of Venetian Plaster with a damp cloth or lid during application to prevent drying.

2) The Venetian Plaster dries quickly. It's important to work in a small area and quickly smooth the plaster with the trowel **BEFORE** it dries. This avoids creating unwanted marks or ridges caused by overworking the plaster as it starts to set. Teaming with a partner is a good way to make this process easier to accomplish.

3) Any subtle texture left by the trowel will create the mottling and definition of your Venetian Plaster. The more you work the plaster, the more texture and markings will appear in the final burnished finish. If you prefer a more subtle finish, do not overwork the finish: smooth the plaster in as few trowel sweeps as possible. If you have a lot of undesirable texture or lines from troweling, you may lightly sand off those areas between coats to get a more subtle pattern in the final finish.

2

Apply 2nd Coat

For the second coat, use the large spatula to scoop up small amounts of the Venetian Plaster and apply over the first coat. Hold the spatula at a 90° angle and skim the surface, filling in any recessed areas, leveling and smoothing as you go. The second (and subsequent coats, if desired) will determine how smooth your final application will appear. Apply slightly more pressure to the spatula as you skim across the surface for the smoothest finish.

Continue across the wall, layering on the second coat avoiding rough spots or "peaks and valleys". Let dry as before. You may apply a 3rd or 4th coat, if desired, for even greater tonal variation and complexity, creating more depth and resulting in a smoother, mirror like finish.



3

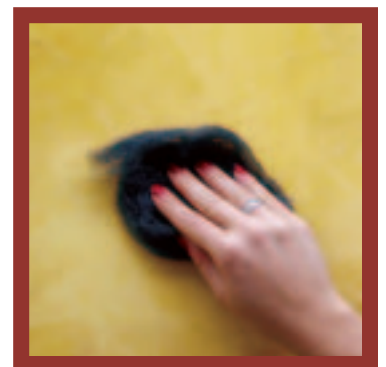
Polish



After applying your final coat, let the plaster dry just to a matte finish. Do not let the plaster dry more than one hour or it will be more difficult to polish or burnish to a glossy finish. Using the steel spatula, hold it almost flat against the surface and rub rapidly in a circular motion while applying pressure. This will polish the inert pigments in the plaster and create areas of high and low gloss while enhancing the pattern in the finish. The more you burnish the finish, the higher the polish or sheen will become. Be careful not to nick the finish. If you accidentally scratch or nick the surface, patch it immediately with a thin layer of Venetian Plaster, let dry and burnish again.

You may also use super-fine steel wool (#0000) to polish the finish. Using steel wool will blend the color variations slightly more and produce a more even sheen than burnishing with the steel spatula.

Be sure to wipe down the surface with a soft cloth to remove any residue before applying the Venetian Plaster Protective Finish.



4

Protect



If your Venetian Plaster will be exposed to moisture or is in a high traffic area, you will want to protect it with Special Effects Venetian Plaster Protective Finish. Apply this protective finish with the steel spatula following the instructions in Step 2 as before. Do not attempt to roll-on this finish. It is designed to maintain the subtle beauty of the plaster's surface while imparting resistance to moisture, oil, dirt, etc. Allow to dry one hour. The clear topcoat will slightly deepen the Venetian Plaster color and add a satin sheen. If a higher gloss finish is desired, you may polish the surface again following directions in Step 3. Read all directions on the Protective Finish label.

You can also embellish your Venetian Plaster Finish with stencils, pearlescent glazes or additional Venetian Plaster colors for a genuine artisan finish!

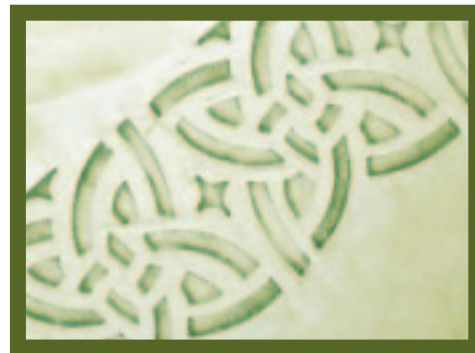
Adding an Stencil Design...

Adding raised patterns to your plaster finish is easy using stencils. Select simple (single overlay) stencil designs made from sturdy (7 mil) mylar. You should not attempt using thin (flimsy) stencils or elaborate designs with multiple overlays.

Apply Venetian Plaster Finish to your walls as instructed in Steps 1-3. Let Dry.

Position the stencil template on the wall and apply a very thin layer of plaster over the stencil design using the Symphony Blue Steel Spatula. Hold the spatula at a 60° angle and gently pull the spatula across the stencil design like a squeegee, removing the excess plaster. Avoid putting pressure on the spatula so it won't force plaster under your stencil template. Gently remove the stencil straight-away leaving the embossed design. Repeat and apply the design as desired. Let the raised stencil design dry until matte. To darken the raised design, burnish gently with steel wool or a steel spatula. Be careful not to "nick" the raised design. The more you burnish this design, the darker and more dominant it will become.

Below: Venetian Plaster in Pera Verde.



Adding an Iridescent Sheen...

Use Special Effects Pearl, Opal or Metallic glazes to add iridescent shimmer to your Venetian Plaster finish. These glazes may be added to the Protective Finish to give an overall lustrous and iridescent finish. Mix 4 to 6 parts of Protective Finish with 1 part of glaze and apply following previous directions. For a more dramatic appearance apply glaze directly to the Venetian Plaster finish by experimenting with sea sponges, color washing brush or you may use the Symphony Blue Steel Spatula for more angular highlights.